



GAT MONTHLY MEMBERSHIP PROGRESS REPORT

Results as of: 3/31/2023

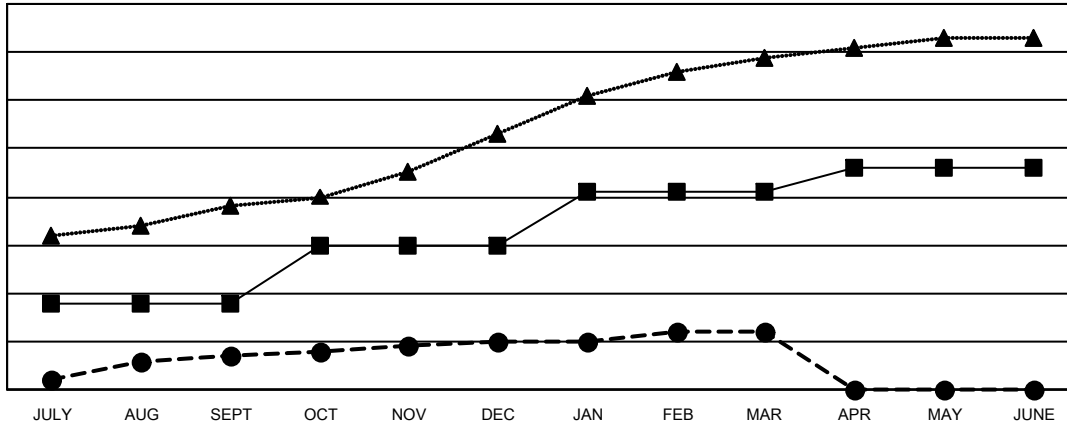
Multiple District 3232

LOCATION: INDIA

Clubs			
RESULTS FOR 2022-2023			
QUARTER	NEW CLUB GOAL	NEW CLUBS	DROPPED CLUBS
JULY/AUG/SEPT	18	7	102
OCT/NOV/DEC	12	3	15
JAN/FEB/MAR	11	2	6
APR/MAY/JUNE	5	0	0

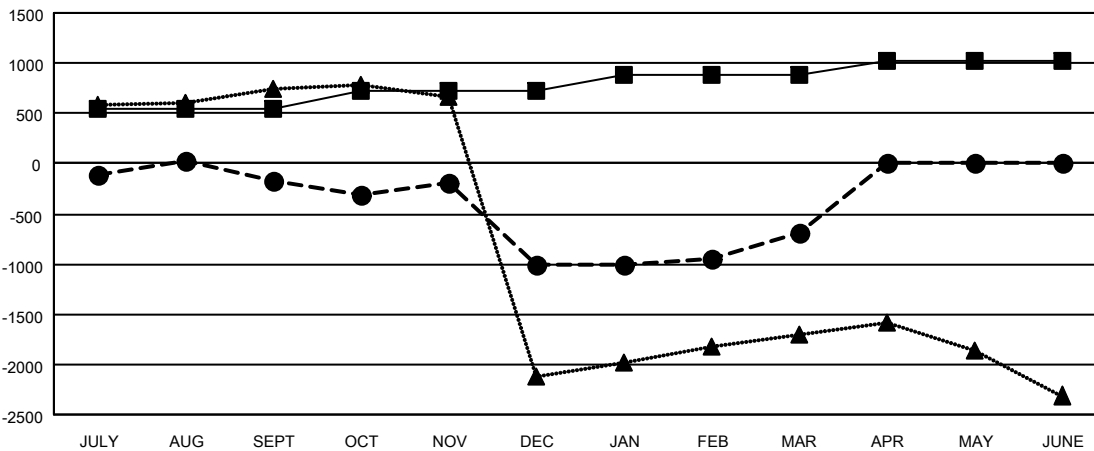
Members			
RESULTS FOR 2022-2023			
QUARTER	MEMBER GROWTH NET GOAL	MEMBER GROWTH ACTUAL	DROPPED MEMBERS ACTUAL (including transfers)
JULY/AUG/SEPT	545	558	658
OCT/NOV/DEC	175	796	1,573
JAN/FEB/MAR	170	506	112
APR/MAY/JUNE	125	0	0

GOALS AND ACTUAL NEW CLUBS CUMULATIVE



- CURRENT YEAR GOALS FOR NEW CLUBS
- CURRENT YEAR ACTUAL NEW CLUBS
- ▲- LAST YEAR ACTUAL NEW CLUBS

GOALS AND ACTUAL MEMBERS CUMULATIVE



- MEMBER GROWTH NET GOAL
- MEMBER GROWTH ACTUAL
- ▲- LAST YEAR MEMBERSHIP ACTUAL

DROPPED CLUBS: 123	258 CLUBS OF 612 ADDED 1 OR MORE NEW MEMBERS	GENDER DISTRIBUTION
DROPPED MEMBERS	CLICK HERE FOR CUMULATIVE MEMBERSHIP DATA	MALE 10,824 (63.15%)
DECEASED 24		FEMALE 6,313 (36.83%)
CLUB CANCELLED 320		NON BINARY 0 (0.00%)
OTHER 1,999		PREFER NOT TO ANSWER 4 (0.02%)
TOTAL 2,343		TOTAL FAMILY UNIT MEMBERS 12,708
		FAMILY MEMBERS PAYING HALF DUES 8,726